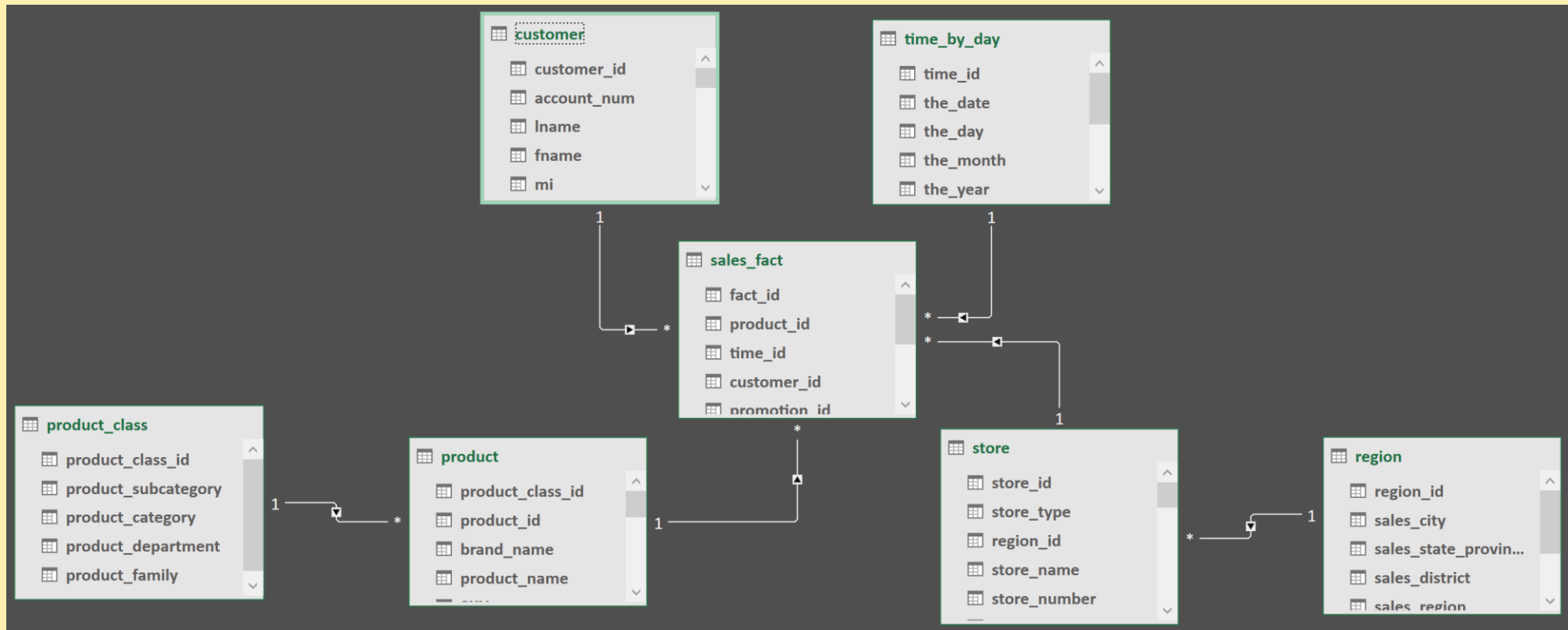


(portion of) FoodMart DataMart



- Accessible from Excel PowerPivot add-in
 - File 2020-11.xlsx (tab Files of Teams)



Exercise 1



- Assume `SUM(store_sales)` as the only metrics (TotalSales)
 1. `Sales(*, ..., *)` is the apex cube
 2. Drill down from 1 by adding `Customer.Country`
 3. Drill down from 2 by adding `TimeByDay.TheYear`
 4. Slice for `ProductClass.Family = 'Food'`
- Write the business question solved by the resulting cube
- Write the SQL query producing the same cube or something close to it

Exercise 2



- Assume `SUM(store_sales)` as the only metrics (TotalSales)
 1. Starting from cube of exercise 1
 2. Slice on `Year=1998`
 3. Drill down from `Customer.Country` to `Customer.City`
 4. Sort Cities in every Country by TotalSales descending
 5. Filter on top 5 Cities per Country
- Write the business question solved by the resulting cube
- Write the SQL query producing the same cube or something close to it

Exercise 4



- Assume `SUM(store_sales)` as the only metrics (TotalSales)
 1. Starting from cube of exercise 2
 2. Slice to `Country='USA'`
 3. Pivot Year to Columns
 4. Show TotalSales as Percentage of column total
- Write the business question solved by the resulting cube
- Write the SQL query producing the same cube or something close to it